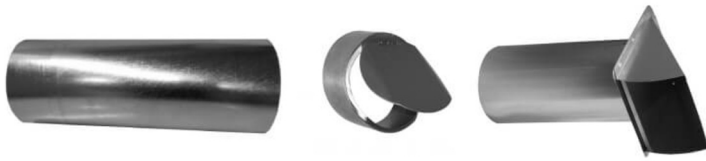


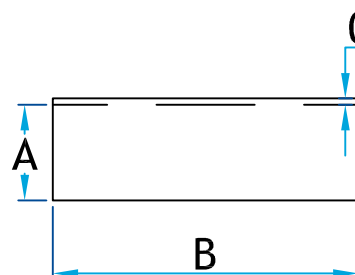
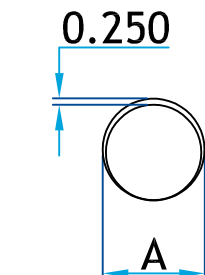
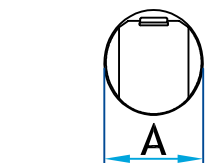
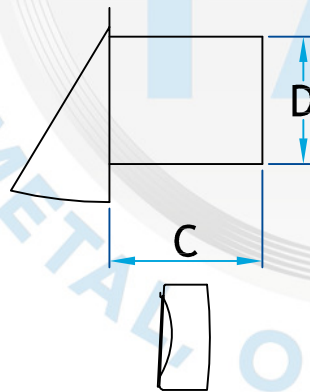
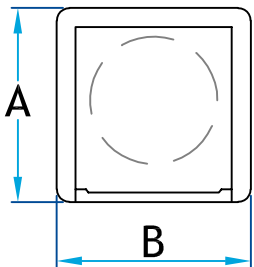
### Description

Kit Raccord et clapet anti-retour utilisé pour évacuer l'aire d'un conduit de sècheuse, de ventilateur de salle de bain et d'une hotte de cuisine



Kit raccord et clapet

| Code<br>Produit | Dimension |     |   |       |   |    |   |
|-----------------|-----------|-----|---|-------|---|----|---|
|                 | A         | B   | C | D     | E | F  | G |
| 2871PL_4X12L    | 6 ½       | 6 ½ | 6 | 3 7/8 | 4 | 12 | 4 |



### Informations supplémentaires

Disponible en gauge et dimension standard seulement

**\*Pour référence seulement\***

[www.lmi-caf.com](http://www.lmi-caf.com)

325, Grande Caroline, Rougemont, QC J0L 1M0

Montréal: 514-878-9675 | Rougemont: 450-469-4935 | Fax: 450-469-4786